

# 2015 DLF E-RESEARCH NETWORK

Webinar 1: RDMS At Your Institution

May 13, 2015



# TODAY'S WEBINAR

- Guest Speaker
- Q & A
- Group activity slides
- Discussion
- Housekeeping
- Tweet about it! #eresearchnetwork @CLIRDLF



D. Scott Brandt, Professor of Library Science and former Associate  
Dean for Research in the Purdue University Libraries

# **DLF E-RESEARCH NETWORK 2015.05.13 WEBINAR**

## **RESEARCH DATA CONSULTATION & COLLABORATION @ THE PURDUE LIBRARIES**

**D. Scott Brandt**  
**Purdue University**

**PURDUE**  
UNIVERSITY  
LIBRARIES



# FIRST... DEFINITIONS

“Digital Curation is defined as the **active** management and **enhancement** of digital information assets for **current and future** use.”

- ✓ active as opposed to passive, and that’s why we build data management services to consult and collaborate
- ✓ enhancement includes metadata, documentation and software to find & use, which takes time and effort
- ✓ discoverable by and available to wider audiences over longer periods of time, which is what libraries do...

# CONTEXT

We tend to focus on the “small science” researchers who report that they have no money or time for data management, and no specific person for data curation, other than graduate students who have received “research integrity” training, but it is not likely that anyone could retrieve usable data easily or quickly.

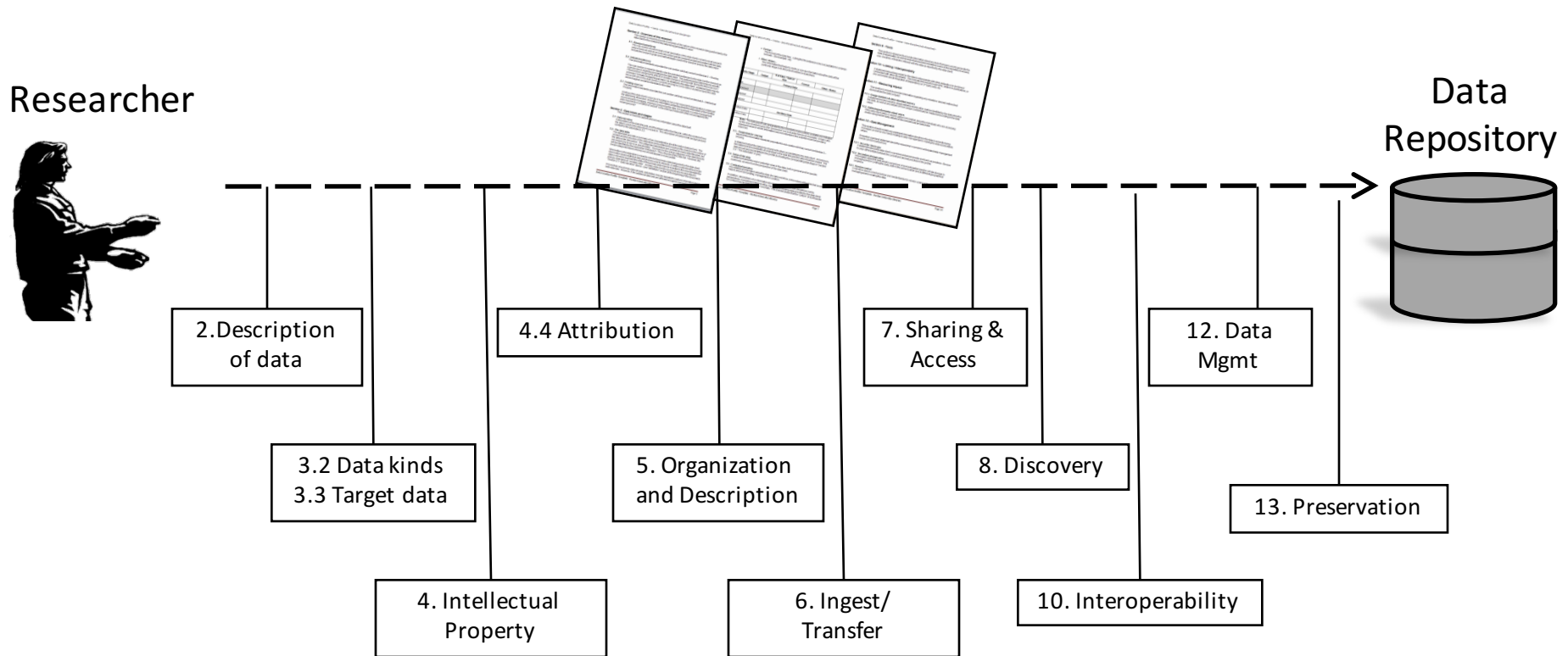


# GUIDING PRINCIPLE

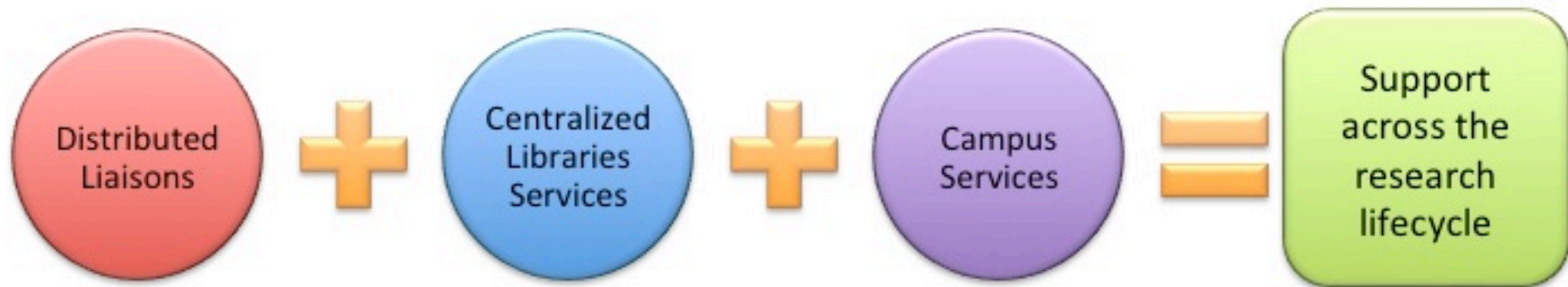
## Multiple approaches needed:

- Our research showed that “Data curation services will need to accommodate a wide range of sub-disciplinary data characteristics and sharing practices.”
- Thus, Purdue combines a full range service institutional data repository and specialists to provide a comprehensive approach to data consultation and collaboration.

# DATA CURATION PROFILES



# ORGANIZATIONAL APPROACH



## Faculty Liaisons

Divisions:

PSET  
HLS  
HSSEB



## Data Management

Data and Metadata Services  
Data Education Working Group  
Distributed Data Curation Center



## PURR

### Digitization Center



### Archives & Spec Collections



## Publishing

University Press  
e-Pubs IR

Rights Management  
University Copyright Office



## OVPR

Research Admin  
Sponsored Programs  
RCR & IRB



## ITAP

Central IT  
HUBzero  
Rosen Center for  
Advanced Computing



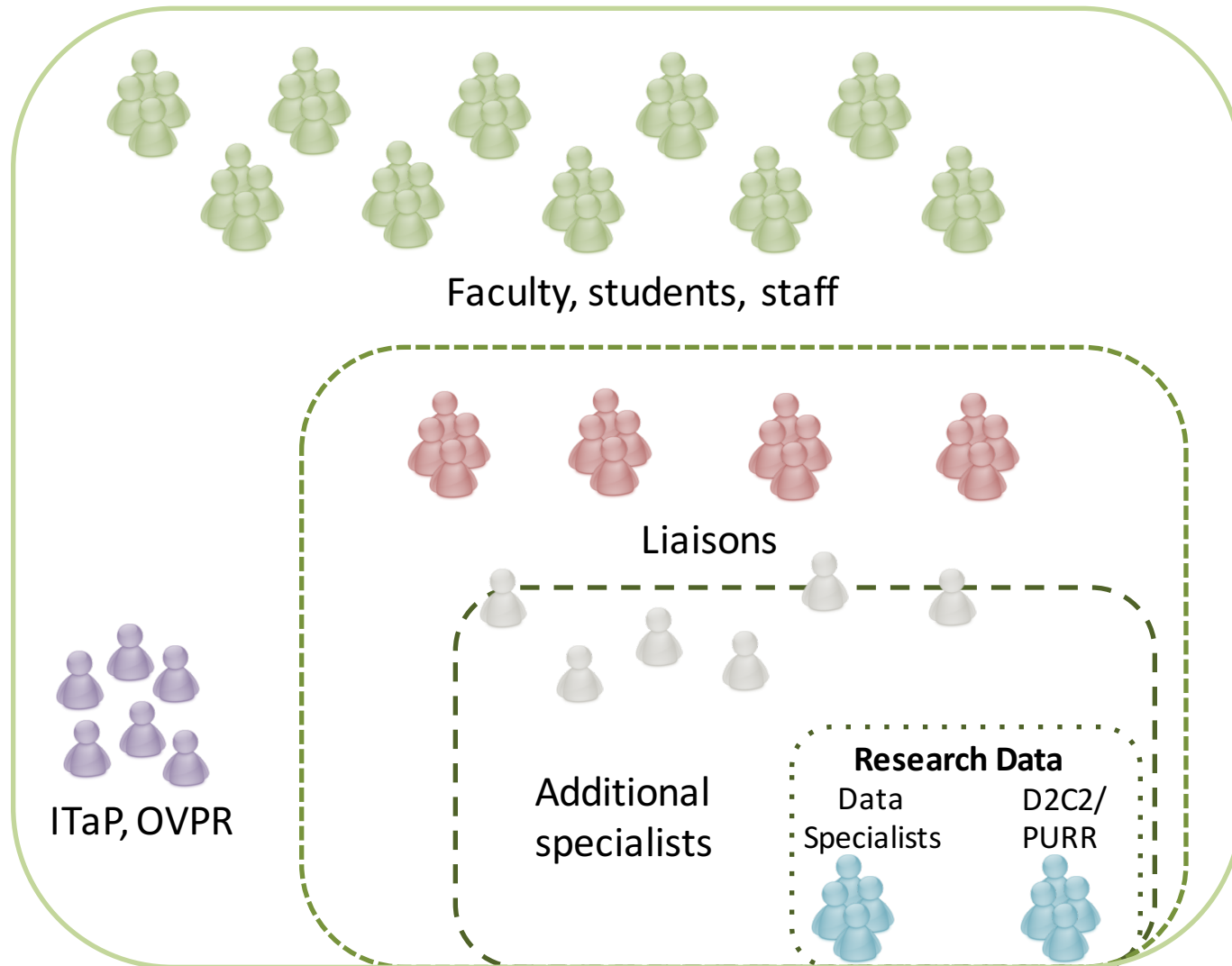
## Disciplinary Faculty

Graduate Students

Undergraduate Students



# BOOTS ON THE GROUND (INPUTS)



# PURDUE UNIVERSITY RESEARCH REPOSITORY

## PLAN

Data mgmt  
planning

## COLLABORATE

Creating  
projects,  
collaborating

## SHARE

IF grant  
awarded,  
more space

## PUBLISH with DOI

Data  
submitted

for  
publishing  
/archiving

## PRESERVE

Discovery  
commitment ends,  
Long term  
preservation decision

**PURDUE**  
UNIVERSITY

Purdue University Research Repository | PURR

Home Browse Content Projects Get Started Contact Us

Search

### What Does My Data Management Plan Need to Address?

There are many things that need to be included in your data management plan. Watch our video tutorials, read the step by step instructions, or view a completed data management plan to help you get started. You can also click the link below to start now.

[Learn More](#)



# CAMPUS COLLABORATION



Sponsored Program Services  
Pre-Award Services

General Info
Pre-Award
Post-Award
Contract Management
Data
Traini

Pre-Award:
General Info
Compliance
Proposals
Sponsors

## Proposal Preparation

- Interdisciplinary Proposals
- OVPR Proposal Preparation Resources
- OVPR Proposal Preparation Assistance

Questions 7a-d are related to [Export Control](#).

7	a) Does this project require sponsor approval of publications? b) Does the announcement restrict participation based on citizenship? c) Does this proposal contain technical data within the statement of work that purposes specific to military or space applications? d) Does this proposal contain technical data within the statement of work that is proprietary to a company or Purdue (i.e. requires a confidentiality agreement) on relevant pages. <input type="checkbox"/>		
8	Are you receiving private <a href="#">health information</a> that is protected by HIPAA?		<input type="checkbox"/> Yes <input type="checkbox"/> No
Project Data			
1	Is there a <a href="#">conflict of interest</a> ?		<input type="checkbox"/> Yes <input type="checkbox"/> No
2	Is this a Bowen Lab project?		<input type="checkbox"/> Yes <input type="checkbox"/> No
3	Is this a Kepner Facility project?		<input type="checkbox"/> Yes <input type="checkbox"/> No
4	List any approved University Centers affiliated with this proposal. <input type="checkbox"/>		
5	Please identify all ITaP units which have or will contribute to this project: <input type="checkbox"/> Envision Center for Data Perceptualization <input type="checkbox"/> Rosen Center for Advanced Computing <input type="checkbox"/> Other ITaP Units <input type="checkbox"/> None		
6	Is this proposal a resubmission of a previously submitted application?		<input type="checkbox"/> Yes <input type="checkbox"/> No
7	Are you an NSF Beginning Investigator?		<input type="checkbox"/> Yes <input type="checkbox"/> No
8	Does the funding agency require a management plan for data or digital products produced using the grant? <input type="checkbox"/> Yes, and we plan to use the Purdue University Research Repository (PURR) <a href="https://research.hub.purdue.edu/">https://research.hub.purdue.edu/</a> <input type="checkbox"/> Yes, and we plan to use another option <input type="checkbox"/> No, funding agency does not require		
9	Will historical sites be affected?		<input type="checkbox"/> Yes <input type="checkbox"/> No
	If Yes, please provide an explanation:		
10	If this project has an actual or potential impact on the environment, has an exemption been		<input type="checkbox"/> Yes <input type="checkbox"/> No



# CAMPUS COORDINATION

**Will you be uploading any data that may be considered by the University to be sensitive or restricted? *REQUIRED***

☐ Yes, this project may involve uploading sensitive or restricted data to PURR.

*Please indicate the type of data that may be involved.*

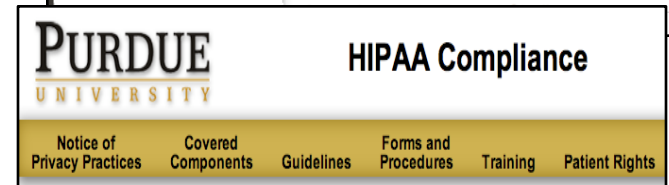
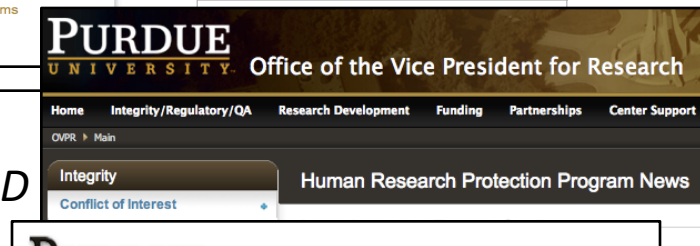
*Check the box if you're not sure.*

☐ This project may involve government-restricted, export-controlled, or proprietary company information (without permission).

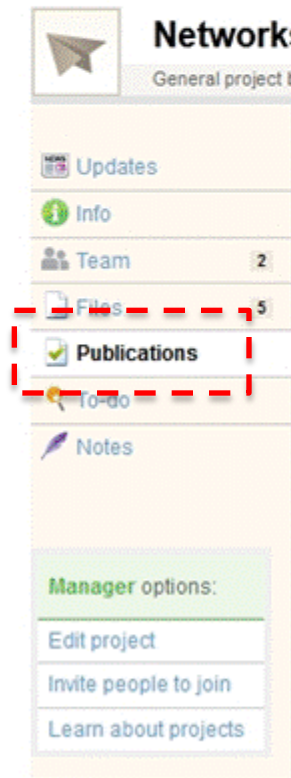
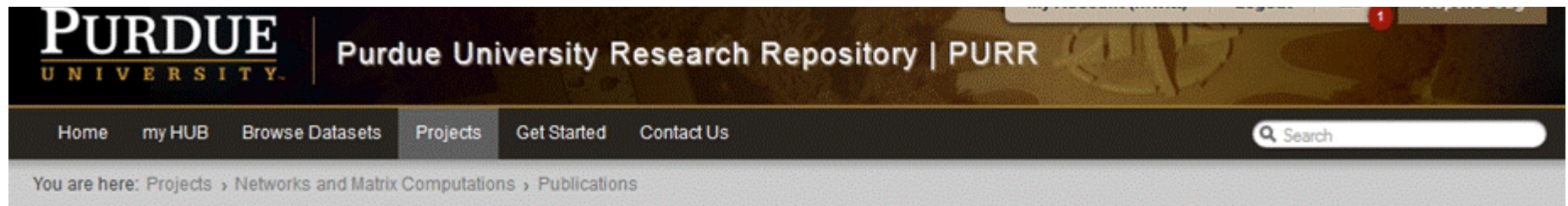
☐ This project may involve data that is governed by an Institutional Review Board (IRB) Approval Protocol.

☐ This project may involve HIPAA data or Protected Health Information.

☐ This project may involve FERPA data or student records.



# DATA PUBLICATION



## Networks and Matrix Computations (nmcomp)

General project by David F Gleich

### Publications

This project has yet no publications. [Start a new publication](#)

### How the publication process works...

- 1 Choose and arrange your content



Select content from your project files. This may be a single file or multiple files bundled together. You may also add supporting documents e.g a user guide.

- 2 Describe publication and submit for review



Next you compose your publication page, adding title, abstract, description, authors and other metadata. You may also add tags and screenshots.

- 3 Publish, archive, or save for review



When draft is ready, you may release your work publicly, archive it, or save draft for internal review. Public release comes with a digital object identifier and requires administrator approval.

To make data sets publicly discoverable and accessible, there is a submission and “publishing” process that requires metadata and documentation.

# PURR (OUTPUTS)



Purdue University Research Repository

PURR

Login

Register

Have a Question?

Home

Publications

Projects

Get Started

Policies

Contact Us

Search

## PURR AT A GLANCE



1,472

DATA MANAGEMENT PLANS



172

GRANT AWARDS



1,296

REGISTERED RESEARCHERS



515

RESEARCH PROJECTS



194

TOTAL CITATIONS

## TOP AUTHORS

AUTHOR	PUBLICATIONS
Walter Gautschi	55
Amit H. Varma	10
Chad Laux	8
Darcy Bullock	8

TOTAL 135 AUTHORS

## RECENTLY PUBLISHED DATASETS

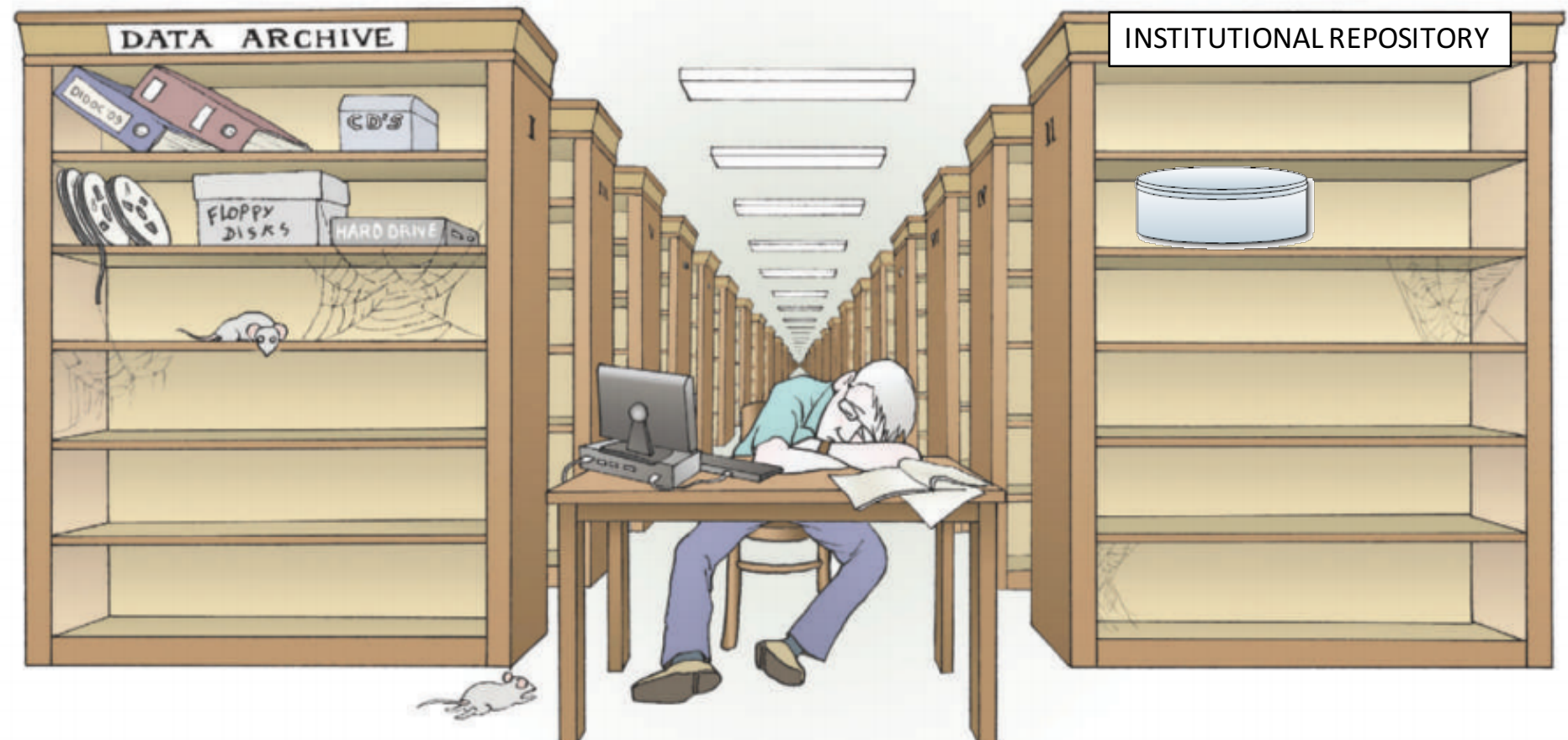
DATASET	PUBLISHED
Purdue University Buildings Demolition, Construction Images, March 2015, MATH Building Camera	5 days ago
Purdue Agronomy Farm Corn Leaf Nitrogen (791812)	April 30
Purdue Agronomy Farm Soybean Row Direction (791810)	April 30
Purdue Agronomy Farm Instrument Altitude (791811)	April 30

TOTAL 225 PUBLISHED DATASETS



# Empty archives

Most researchers agree that open access to data is the scientific ideal, so what is stopping it happening? **Bryn Nelson** investigates why many researchers choose not to share.



# RESEARCH DATA SPECIALISTS

Home > Research Data

## Welcome to Research Data

We apply the principles of library and archival sciences to meet the challenges and needs of researchers and students in finding, using, preparing, managing, curating and preserving research data. Working with our liaison librarians, we can help you plan, describe, disseminate, steward and archive your datasets.

Have a question? Contact us at: [researchdata@lib.purdue.edu](mailto:researchdata@lib.purdue.edu)



## OUR SERVICES

Purdue University Research Repository

[+]

Data Management Planning

[+]

Metadata & Data Documentation

[+]

Data Management & Curation Education

[+]

Big Data @ Purdue Libraries

[+]

Data Consultation

[+]

# RESEARCH DATA (OUTPUTS)

The Research Data Specialists provide leadership, coordination, and expertise in areas of data management and data education. We do this by:

- exploring, planning and designing applications, methodologies, tools and techniques to improve **data management planning**
- working closely with liaison librarians to promote and deliver data services, such as using **Data Curation Profiles to assess data workflow**
- coordinating data-related outreach efforts, such as **using PURR for data publishing**, with subject liaisons
- developing courses and instruction related to **data information literacy**

# DATA MANAGEMENT PROBLEM

It is USAID's expectation that data collected for this project will be made accessible...

Year/Disaggregation	2015	2016	2017
Targets	58	224	2030
Type of individuals (REQUIRED)			
Producers	40	200	2000
People in government			
People in private firms	18	24	30
People in civil society			
Disaggregates not available			
Sex (REQUIRED)			
Male	20	100	1000
Female	38	124	1030
Disaggregates not available			
By Country (REQUIRED)			
Kenya	29	112	1015
Senegal	29	112	1015
By Age (Optional)			
By Ethnicity (Optional)			
By Income (Optional)			

## Feed the Future Monitoring System

Indicator data									
Indicator: 4.5.2(13): Number of rural households benefiting directly from USG interventions (\$)									
<a href="#">Go to Previous Indicator</a>									
Calculate totals									
Save									
Indicator / Disaggregation	2014 Deviation Narrative	2014 Comment	Baseline Year	Baseline Value	2014 Target	2015 Actual	2015 Target	2016 Target	2017 Target
4.5.2(13): Number of rural households benefiting directly from USG interventions (\$)	Add	Add					40	240	2,240
New/Continuing							40	240	2,240
New							40	200	2,000
Continuing								40	240
Disaggregates Not Available									
Gendered Household Type							40	240	2,240
Adult Female no Adult Male (FNM)									
Adult Male no Adult Female (MNF)									
Male and Female Adults (M&F)							40	240	2,240
Child No Adults (CNA)									
Disaggregates Not Available									

## USAID Development Data Library

South Sudan Baseline Survey of Agricultural Practices and Household Conditions	CSV	JSON	WWW
Trade Capacity Building	WWW	JSON	
USAID Dollars Obligated and Dollars Spent	WWW	JSON	
USAID Environmental Compliance Database	WWW	JSON	
USAID Forward: Accelerate financial inclusion, improve transparency and catalyze private sector development	CSV	JSON	PDF
USAID Forward: Focus Strategic Planning	CSV	JSON	PDF
USAID Forward: Improved decision-making	CSV	JSON	PDF
USAID Forward: Maximize resources by leveraging commercial private capital	ZIP	JSON	PDF
USAID Forward: Strengthen and retain best talent	CSV	JSON	PDF
USAID Forward: Strengthen local capacity	ZIP	JSON	PDF
USAID Forward: Strengthen staff capacity	CSV	JSON	PDF
USAID Forward: Scale up and leverage private resources	CSV	JSON	PDF
USAID Public-Private Partnerships Database	XML	JSON	DOCX

## Purdue University Research Repository

**Purdue University Research Repository**

[Home](#)
[Publications](#)
[Projects](#)
[Get Started](#)
[Policies](#)
[Contact Us](#)

You are here: [Publications](#) > [Datasets](#) > [Linking Pressure and Saturation through Interfacial Areas in Porous Media](#) > [About](#)

### Linking Pressure and Saturation through Interfacial Areas in Porous Media

By Niasar, V.<sup>1</sup>, Hassanizadeh, S.<sup>2</sup>, Pyrak-Nolte, L.<sup>1</sup>, Berentsen, C.<sup>1</sup>

1. Purdue University 2. University of Utrecht

Supplementary materials for the paper: Cheng, J.-T., L. J. Pyrak-Nolte, D. D. Nolte, and N. J. Giordano (2004), Linking pressure and saturation through interfacial areas in porous media, *Geophys. Res. Lett.*, 31, L08502, doi:10.1029/2003GL019282.

Listed in [Datasets](#)

Download

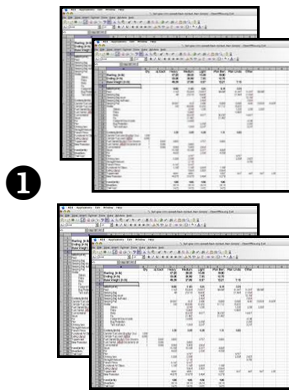
Version 2.0 - published on Sep 24, 2013  
doi:10.4233/CD39K4558J - cite this

CC BY-NC-ND 4.0 International

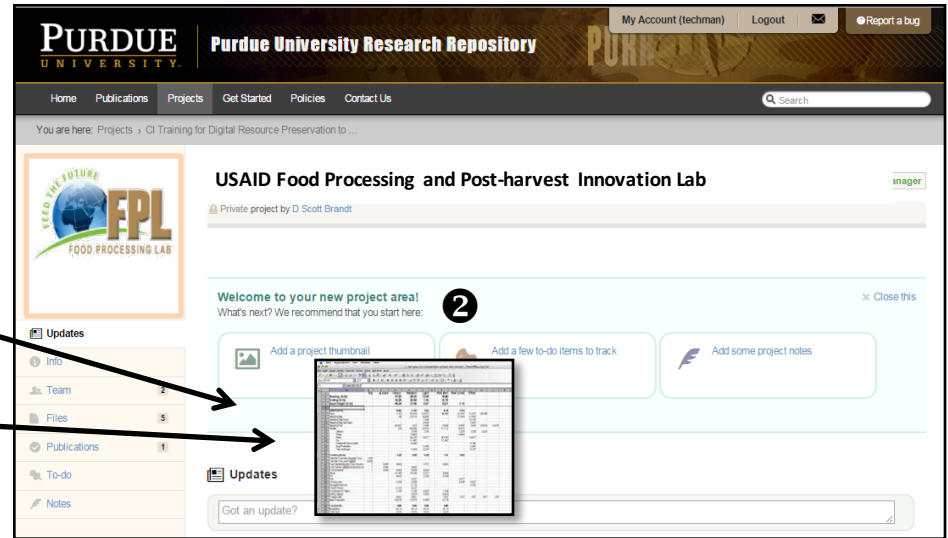
[About](#)
[Supporting Docs](#)
[Versions](#)
[Reviews](#)
[Questions](#)
[Comments](#)

... how can the Libraries help?

# DATA MANAGEMENT PLAN



1



2

1. Data is collected in the field and passed on data steward
2. Data can be aggregated in PURR
3. Documentation is collected
4. Data indicators uploaded to the FTFMS database
5. Over time, other datasets are deposited with documentation in repositories such as DDL or PURR

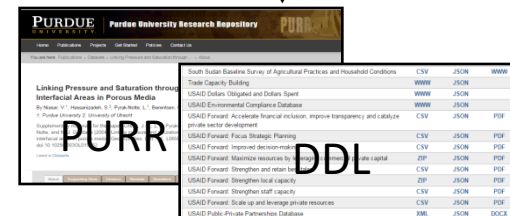
3

1. Targets  
Description of data (e.g., Number of individuals who have received USG long-term agricultural sector productivity or food security training.)
2. Project-specific Definition of Indicator(s)  
As applicable (e.g., total number of students currently enrolled or trained in a master's Ph.D. program and post-doctoral/fellows.)
3. Disaggregation  
Description (e.g., #Targets, Sex (M/F), Country of Origin, etc.)  
Table (include table view for formatting data)
4. Data Source(s)  
Description (e.g., number of students funded on this project that earn degrees)
5. Collection Method  
Description (e.g., Project PIs will submit information on new students to the Project Assistant for compiling in a spreadsheet on capacity building.)
6. Metadata  
Structural (data definition(s) and units of measurement for each element in Table above)  
Administrative (creator of data file, rights assignment, where collected, version)  
Descriptive (assignment of X descriptors ("tags") from [name] classification system  
Technical (format and size of file which comprises Table above, data created)
7. Responsibility  
Who is responsible for collection/generation of data  
Anonymization of personal information needed?  
Rights statement(s) needed?

4

FTFMS

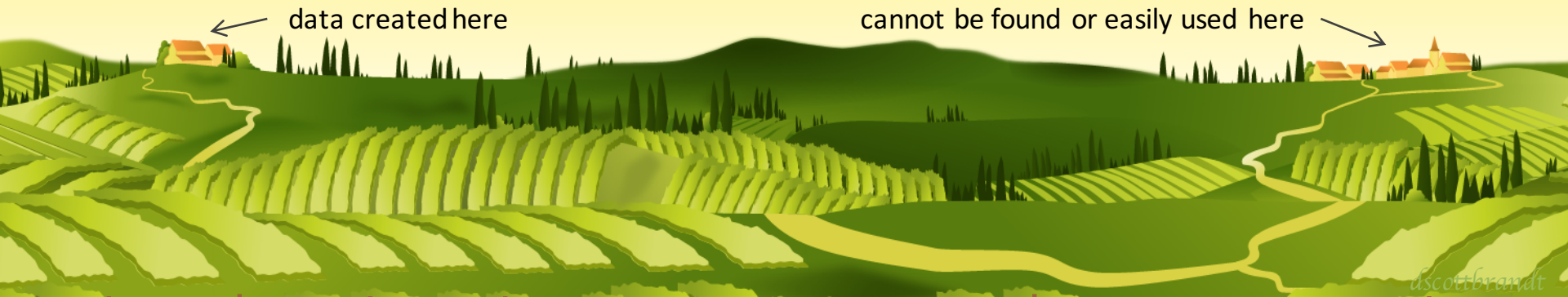
5





# IPNI ACCESS & REUSE PROBLEM

## The Ag data landscape...



No data  
mgmt plan

Methods and  
protocols not  
documented  
for sharing

No use of file naming  
conventions to support  
organization

Lack of  
consistent data  
standards

Workflows not  
well organized  
or documented

Need to specify  
target data for  
publication

Does not integrate  
open access tools  
for interoperability

Lack of  
access and  
use policies

Not well described  
for wide scale use  
and discovery

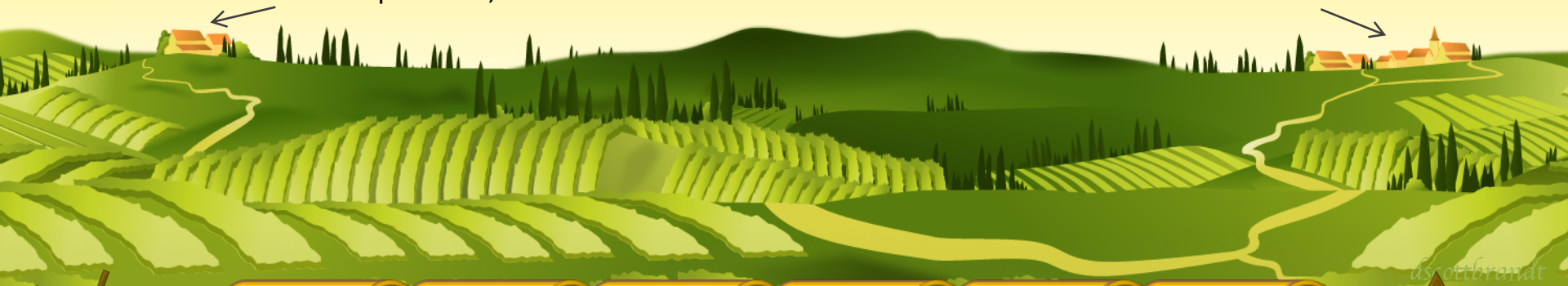
Unclear how to  
attribute/cite

No thought given  
to long term  
preservation

# IPNI CURATION PIPELINE

## Ag data curation pipeline...

A set of practices, tools and services that ensure the use and reuse of data over time



### Plan & Design

Policies, practices and roles are defined with the intent of making data available to others

### Collect & Capture

Methods are well documented and community standards applied

### Interpret & Analyze

Open source software and tools are used to facilitate use

### Release & Publish

Policies and activities of dissemination follow most open access practices

### Discover & Use

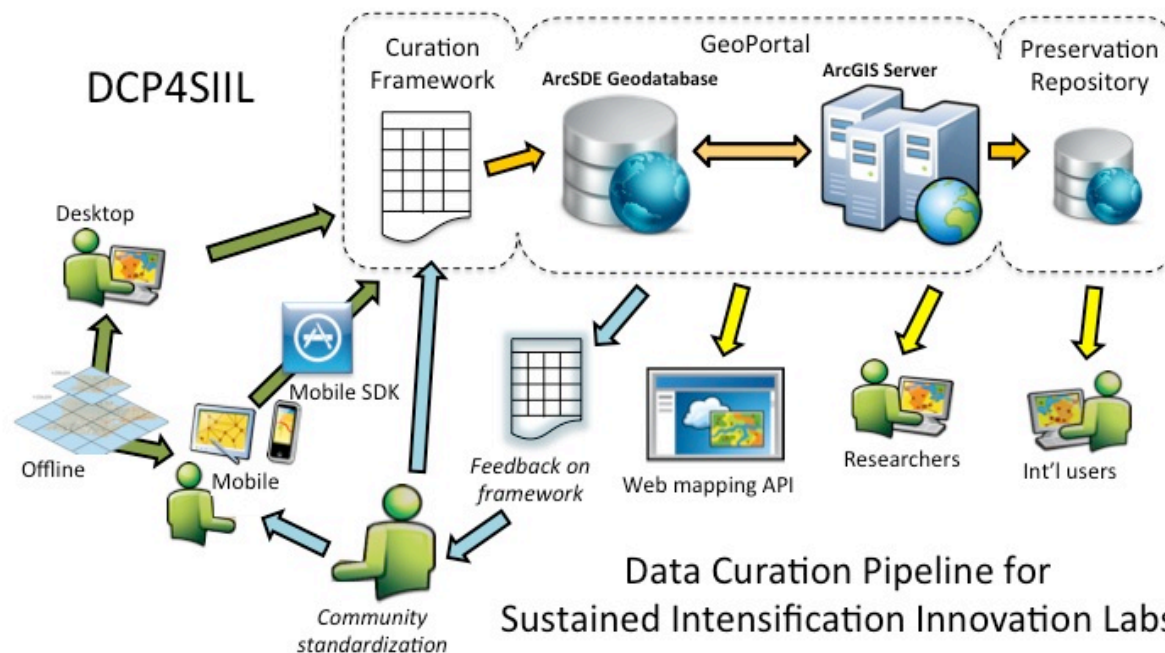
Documentation and metadata ensure that data sets can be found and used by many

### Manage & Preserve

Knowledge is managed for long term preservation and retrieval

# GIS + DATA SPECIALISTS

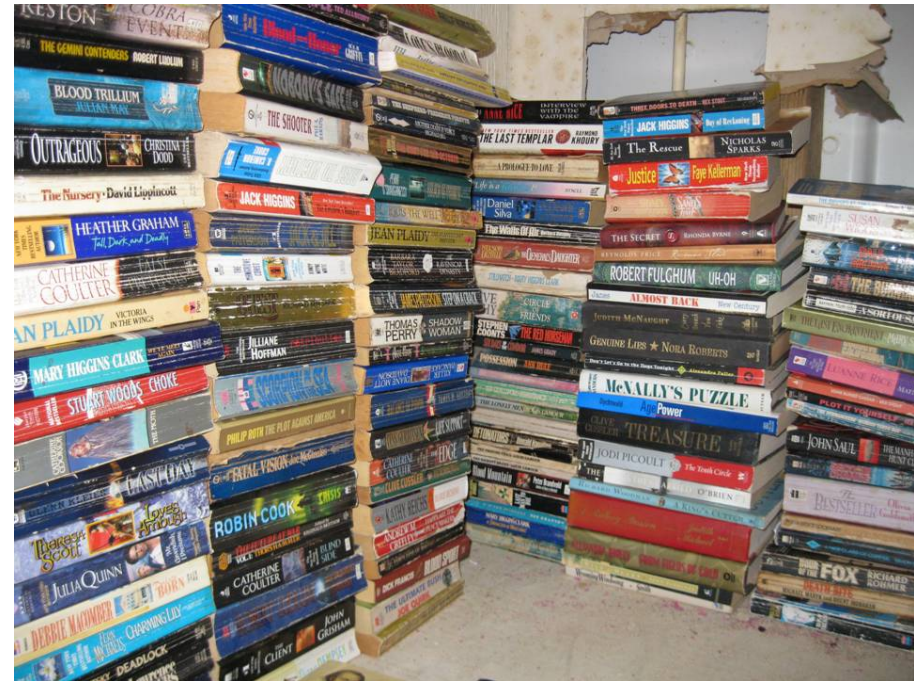
Data Curation Pipeline for Sustainable Intensification Innovation Labs (DCP4SIIL): The Pipeline will comprise a framework for collecting data and associated metadata, a platform to provide easy data entry and capture, as well as analysis and dissemination, and guidelines for “enhanced” Good Lab Practice to ensure community development and adoption of standards and best practices in data management and curation.



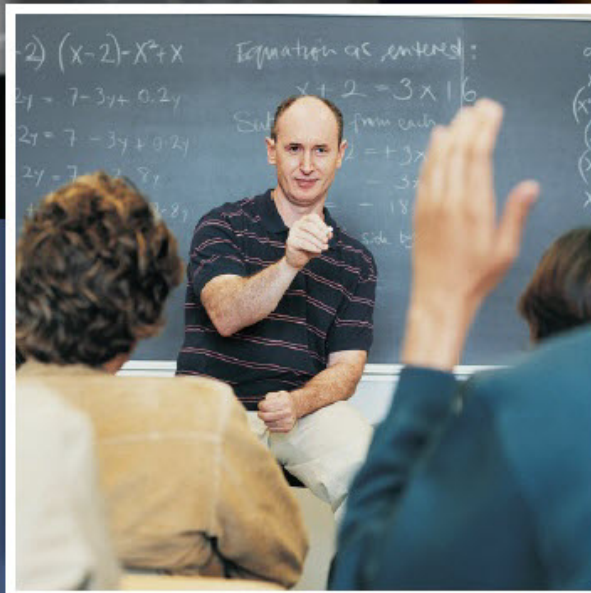
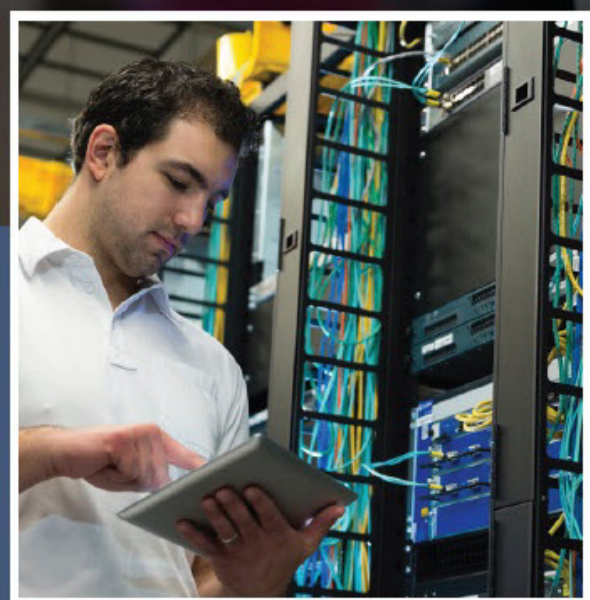


# PRODUCERS AND CONSUMERS

Faculty, Graduate and Undergraduate Students



# DATA LITERACY EDUCATION

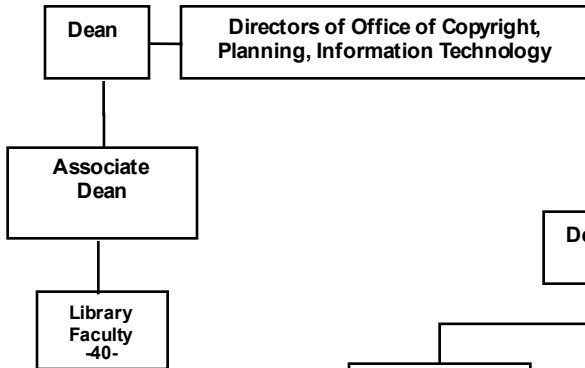


<http://datainfolit.org>

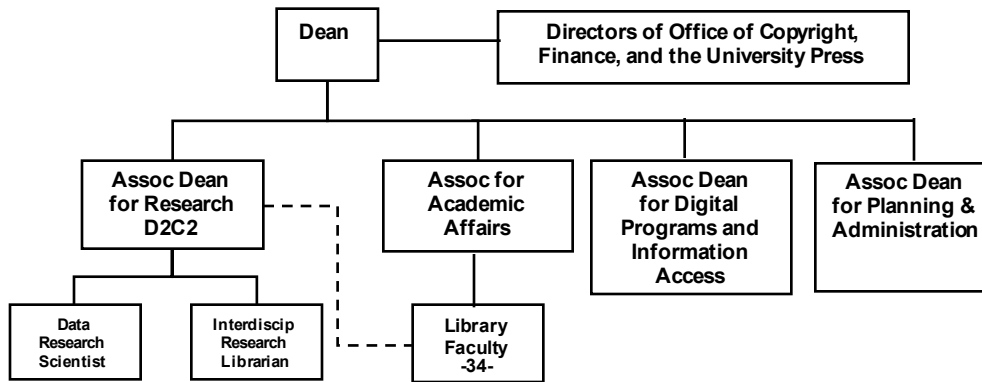
**PURDUE**  
UNIVERSITY  
LIBRARIES

# THINGS TAKE TIME

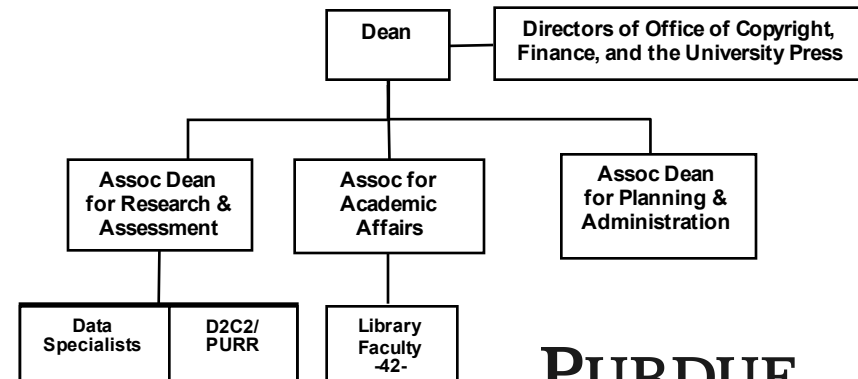
2003-4



2006-7

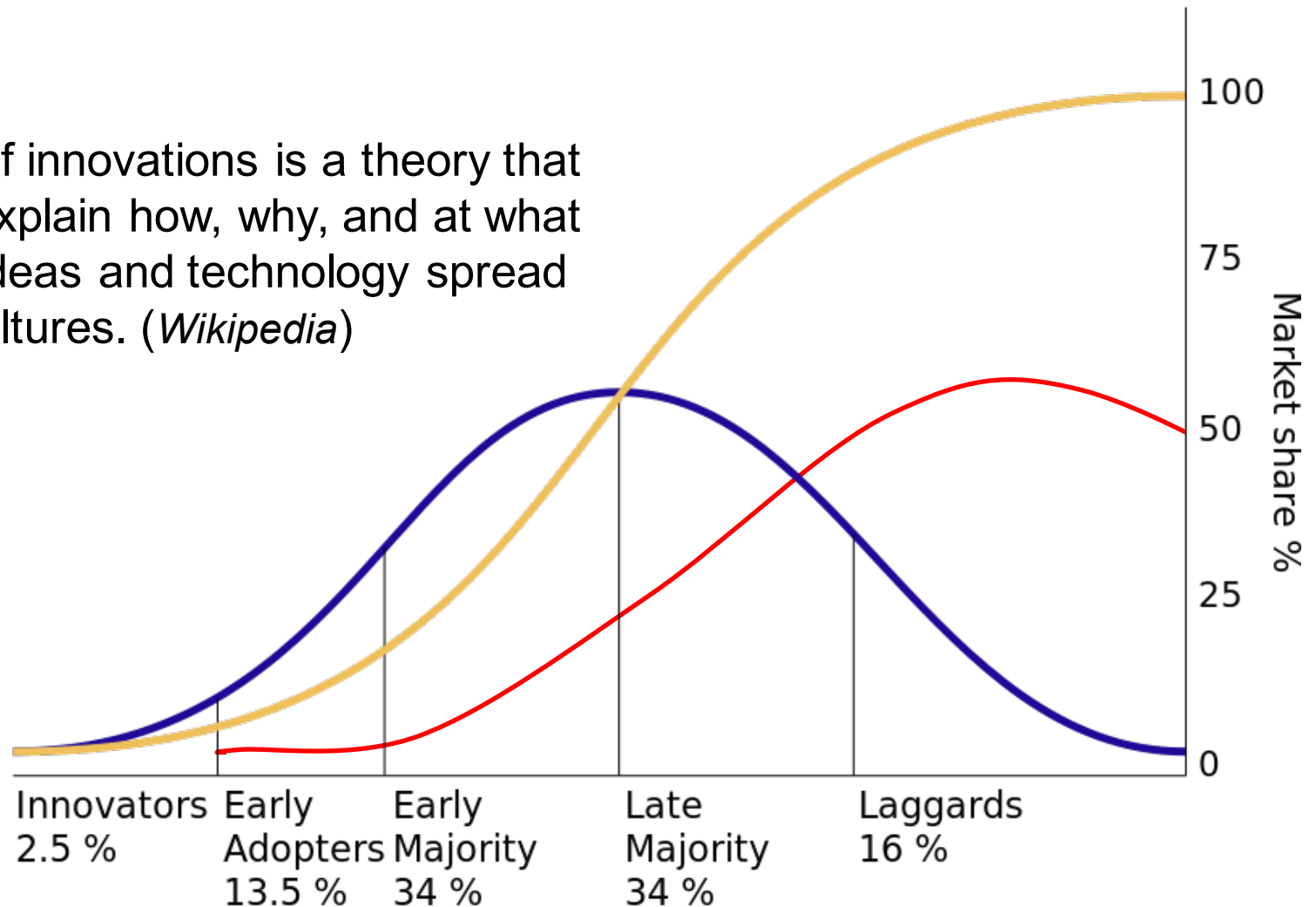


2013-15



# SOME THINGS TAKE A LONG TIME

Diffusion of innovations is a theory that seeks to explain how, why, and at what rate new ideas and technology spread through cultures. (*Wikipedia*)





# OUTCOMES

## Curiosity + Collaboration = Choreographic Expression

*A History of Concert Dance at Purdue University 1931-2011*

### - The Queen is Dead -



Excerpts from the 2009 Purdue Contemporary Dance Company performance of "The Queen is Dead".

**Choreographer's notes:** "The Queen is Dead was created in about 3 weeks-- a very fast process for me. I started from a very different premise than where I ended. I used some concepts for the original movement vocabulary creation from the early ideas, and then used a different concept when actually constructing the piece. I used a table in a coffee shop where I was sitting to prepare for rehearsals, plus ideas about the music, and then it all came together when a mentor suggested using the actual music used for the original performance, created for a different cast, in Milwaukee, Wisconsin, and then set on the PCDC cast. I think it totally worked with the 2 women and 1 man."

Date:	2009	Performers:
Venue:	Hansen Theatre, Yue-Kong Pao Hall, Purdue University	Musicians:
Choreographer:	Holly Jaycox (Division of Dance faculty)	Lighting Designer(s):
Composer:	N/A	Costume Designer(s):
Sound Designer(s):	Seth Warren-Crow	Set Designer(s):
Source Music:	William Boyce Propellerheads	Videographer:
Other Collaborator(s):		

## Phosphorus and Potassium Influence on Alfalfa Nutrition

Studies on the influence of phosphorus and potassium nutrition on alfalfa. It includes numeric data such as yield, plant mass, plant counts, and tissue concentration of various nutrients.

Supporting Docs Versions Reviews Questions Citations

This is a master file of merged excel files with data from several studies on the influence of phosphorus and potassium nutrition on alfalfa. It includes numeric data such as yield, plant mass, plant counts, and tissue concentration of various nutrients. Plants that are poorly fertilized and do not have adequate phosphorus and especially low potassium showed that plants did not necessarily die in winter with low potassium stress.

Study dates: 1997 to 2004.

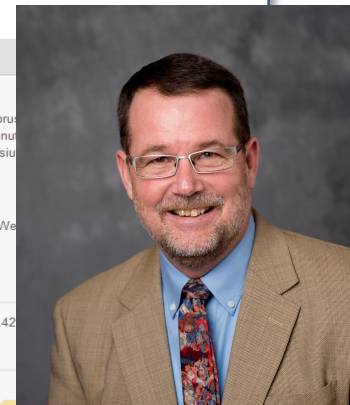
Location/Latitude and Longitude: Throckmorton Purdue-Agricultural Center located 15 km south of West Lafayette, Indiana.

Researchers should cite this work as follows:

Jeffrey J Volenec, (2012), "Phosphorus and Potassium Influence on Alfalfa Nutrition": (DOI: 10.4230/10.4231/D3251FJ7S - cite this)

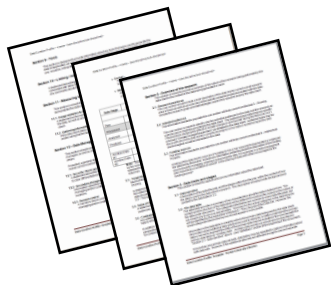
Tags: Alfalfa Forage composition Forage legumes Forage quality Medicago sativa Nutritive value Phosphorus fertilizer Potassium fertilizer Soil fertility Winter hardiness Yield components

Download (XLS)  
Additional materials available (1)  
Version 1.0 - published on Feb 22, 2012  
doi:10.4231/D3251FJ7S - cite this





# MORE OUTCOMES



1334 toolkit users  
360 librarians trained



Other universities use it to consult with researchers



Used as class assignments/projects in library and information science schools

Data Profiling for a Water Quality Lab  
(profiling multiple GAs data workflow)



Profiles used to develop focus group discussions with faculty



Profiles as basis for cases studies of UMMS/WPI Curriculum Frameworks



Model for collection, validation and publication of a range of data-centric “capability profiles”:  
Community Capability Model Framework  
Working Group for the Research Data Alliance



# AND EVEN MORE OUTCOMES

## 2013 Association of College and Research Libraries' Science and Technology Section Innovation Award: Distributed Data Curation Center and the Data Curation Profiles Toolkit *and* 2015 Association of College and Research Libraries' Excellence in Libraries Award

Brandt, D. Scott and Kim, Eugenia. (2014). "Data Curation Profiles as a means to explore managing, sharing, disseminating or preserving digital outcomes." *International Journal of Performance Arts and Digital Media*.

Carlson, J. (2014). The use of lifecycle models in developing and supporting data services. In J. Ray (Ed.), *Research Data management: Practical strategies for information professionals*. West Lafayette, IN: Purdue University Press.

Brandt, D. Scott (2013). "Purdue University Research Repository: Collaborations in Data Management." In J. Ray (Ed.), *Research Data management: Practical strategies for information professionals*. West Lafayette, IN: Purdue University Press.

Carlson, J., & Stowell-Bracke, M. (2013). Data management and sharing from the perspective of graduate students: An examination of culture and practice at the Water Quality Field Station. *portal: Libraries and the Academy*, 13(4). p.343-361. doi: 10.1353/pla.2013.0034

Lyle, J., Vardigan, M., Carlson, J., & Nakao, R. (2013). An applied approach to data curation training at the Inter-university Consortium for Political and Social Research (ICPSR). *DigCurV 2013 International Conference*. Witt, M. (2013). *Databib: Cataloging the World's Data Repositories*. CALIBER 2013, Gandhinagar, India. Also invited for 11th Library Lecture Series, Jawaharlal Nehru University, New Delhi, India.

Carlson, J. (2013). Opportunities and Barriers for Librarians in Exploring Data: Observations from the Data Curation Profile Workshops. *Journal of eScience Librarianship* 2(2): Article 2.

Carlson, J., Johnston, L., Westra, B., & Nichols, M. (2013). Developing an approach for data management education: A report from the data information literacy project. *International Journal of Digital Curation*, 8(1). 204-217.

Carlson, J. (2012) *Demystifying the Data Interview: Developing a Foundation for Reference Librarians to Talk with Researchers about their Data*

Witt, M. & Yu, Y. (2012). "Refactoring HUBzero for Linked Data." *ACM/IEEE Joint Conference on Digital Libraries*, Washington D.C.

Witt, M. (2012). "Co-designing, Co-developing, and Co-implementing an Institutional Data Repository Service". *Journal of Library Administration*, 52(2).

Brandt, D. S. Carlson, J., Witt, M., Kim., (2011) "New Roles for Libraries in Data Related Areas." *E. Stellenbosch University 2011 Annual Library Symposium*, Stellenbosch University, South Africa

Thank you!

Questions?

D. Scott Brandt

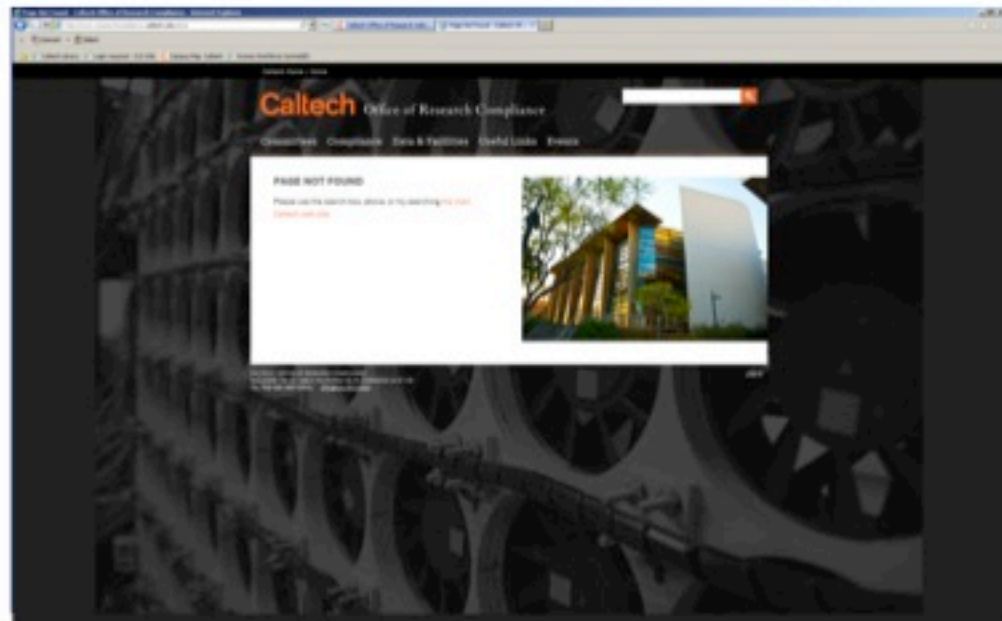
[techman@purdue.edu](mailto:techman@purdue.edu)

# Research Data Management Planning & Design at Caltech

Dona Wrublewski and Gail Clement  
Caltech Library System

# Current State

- Data management has a low-visibility footprint here
  - Could be because all is well and Library is not (perceived to be) needed
    - Activities are decentralized and a lot is happening in silos *OR*
    - Activities are centralized but Library overlooked as a partner
  - Could be because needs are not yet established: no one asking
  - Could be because no one has faced compliance issues *yet*



## Guiding principles for our work

- Don't presume there is a top down interest in RDM at campus scale
  - Expected culture: Likely things are being handled in distributed fashion, by diverse research groups, in accordance with funder/publisher requirements
- Don't presume Library's role – need to ask key stakeholders if/how we can help
- All proposed new resources and services need to be based on evidence (strong culture of data driven decision making)
- All proposed new resources and services need to be funded (not taken out of existing, highly constrained Library budget)

# Beginning the Process

- Assess awareness and degree of perceived need based on campus culture and practice
  - Where to start conversations (via structured interviews)
    - VPR
    - Provost
    - CIO
    - Faculty Board (Senate)
    - Grad Student Association
    - Post Doc Association
  - Find out if a Library role is welcome
  - If Library role welcome, how can we help?
  - Establish that new services will require additional funding
    - Already there are many competing demands on Library, coupled with static budget



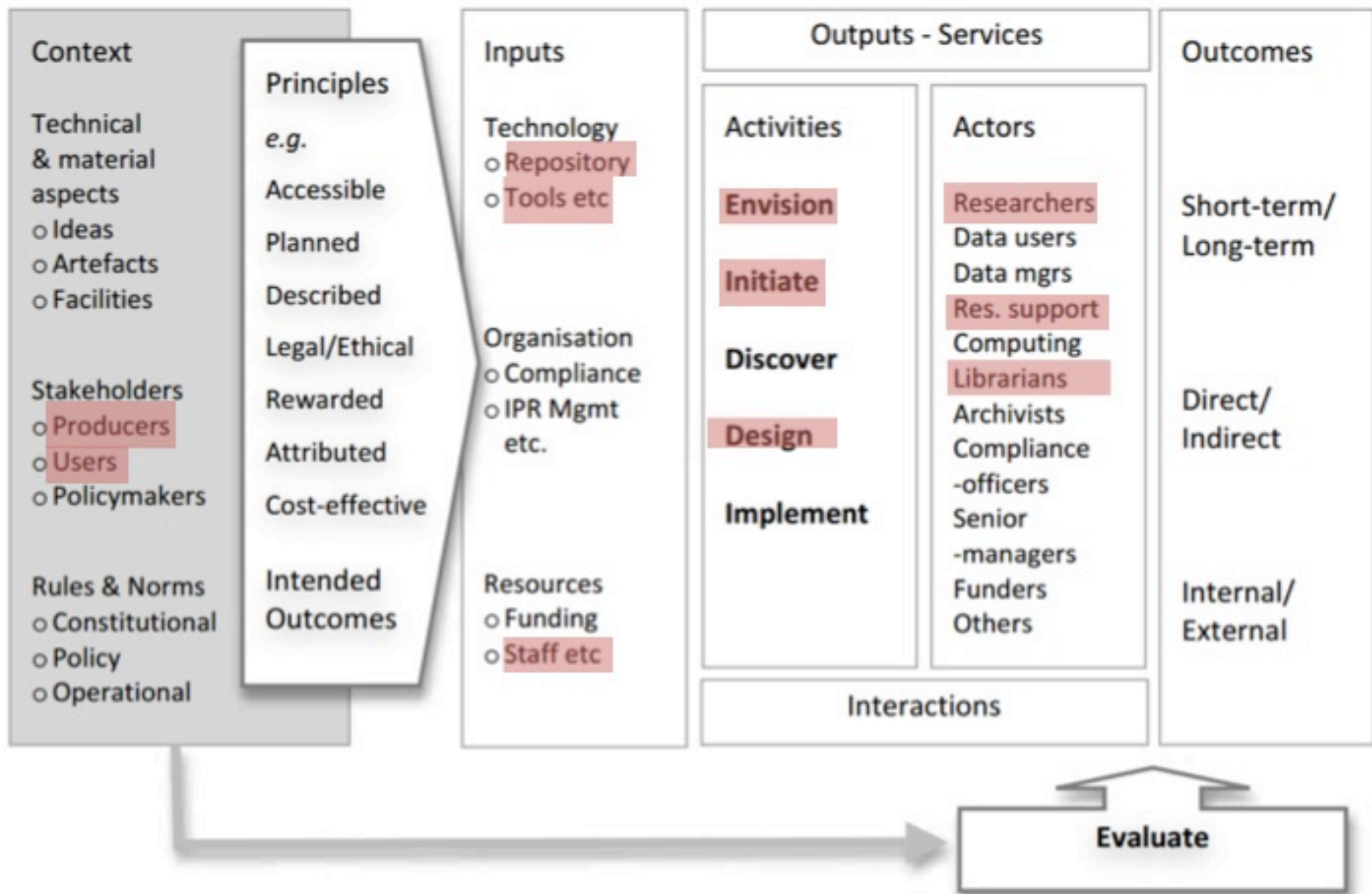


Figure 1 The process of developing research data management services





ScholarSphere

Repository inspiration

Realistic Peers



LIBRARIES  
digital conservancy



RESEARCH DATA SERVICES  
UNIVERSITY OF COLORADO BOULDER

Aspirational  
Peers



# UNIVERSITY OF FLORIDA



*HiPerGator*: UF Research Computing; *Early IBM Computer in Statistics Lab & Webb holds a roll of data*: UF University Archives, UF Digital Collections

# UF: CONTEXT

- Public, land-grant; one of 17 in the AAU
- One of the largest, most complex, comprehensive universities in the world
- “Data”: basic and applied sciences, humanities, arts, law, design, education, journalism, & more; 16 colleges; 150+ centers/institutes; 50,000+ students; 4,000+faculty
- Public and translational research, broader impacts, funder requirements
- Historically underfunded
  - Best at being poor
  - Tactical, opportunistic, strategic → parallel activities
- Infrastructures are always local
  - Culture and rich tradition of collaboration & innovation
  - Focus on building together to enable radical collaboration



# UF: Research Data Services

Context, principles, inputs, outputs-services, outcomes

- Superb technical infrastructure: HiPerGator, UF Digital Collections (powered by SobekCM), UFApps, GatorBox
- Excellent, evolving socio-technical infrastructure: people, policies, technologies, communities (building communities of practice)
- Libraries, Research Computing, Office of Research: collaboration to determine, implement campus-wide supports
- Data policy campus-wide (for implementation as best practices now, as a policy pre-2020)



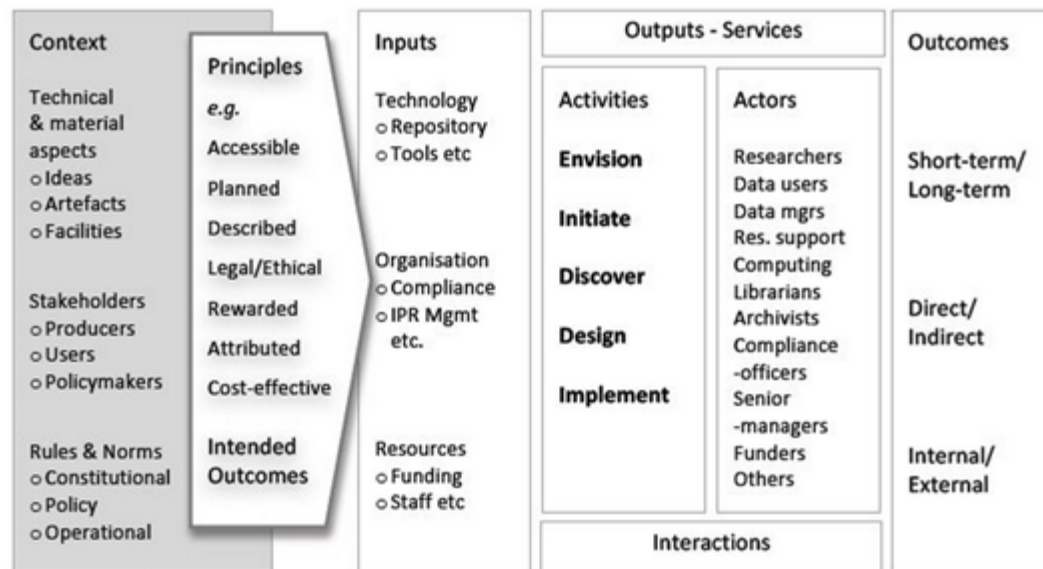
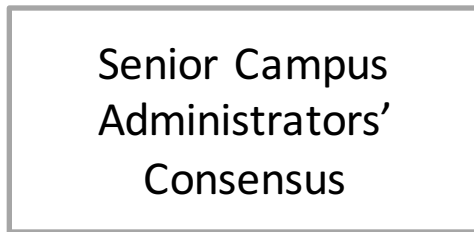


Figure 1 The process of developing research data management services



# *Menus: The Art of RDMS Development*

Inspired by our Special Collections *Menus: The art of dining*

<http://digital.library.unlv.edu/collections/menus/about-collection-0>

## **Main Dishes (market price)**

- Case Studies
- (DAF) Data Asset Framework
- (CARDIO) Collaborative Assessment of Research Data Infrastructure and Objectives
- (DCP) Data Curation Profiles
- Stakeholder Profiles, Personas, and Usage Scenarios
- Development Workshops

## **Blue Plate Specials**

- Embed Questions in Campus-wide Online Survey
- Environmental Scan
- Read Data Curation Profiles (on Purdue site)

*Warning – half-baked approaches may be harmful to institutional health.*





# THANK YOU!

- Webinar 2: June 10<sup>th</sup>, 1:00-2:30 PM EST - “Data Management Needs”
- DLF Forum (Oct. 26-28)
  - Collaborate on a panel / presentation
  - CFP closes June 22
- CLIR Connect